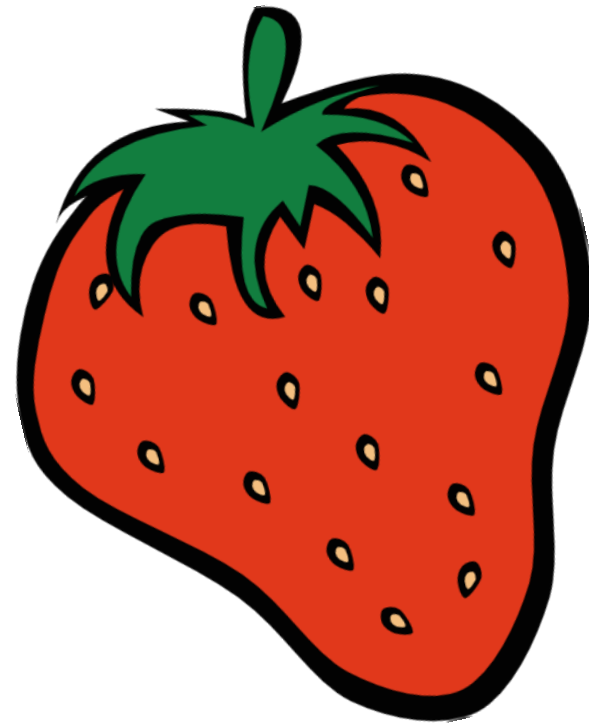


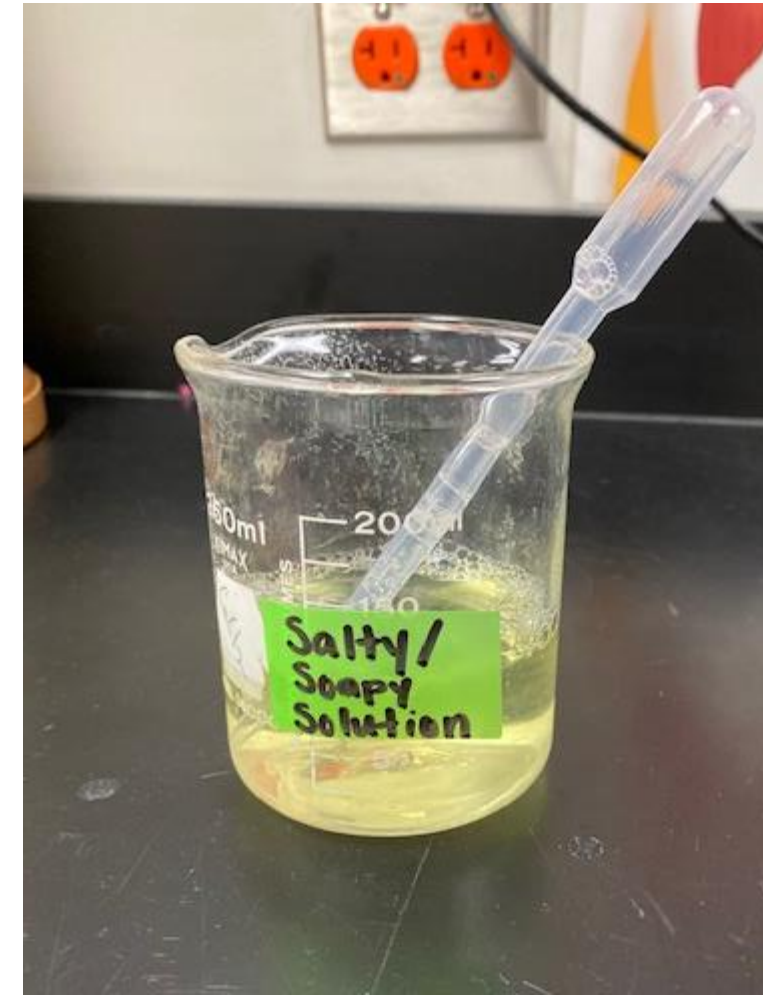
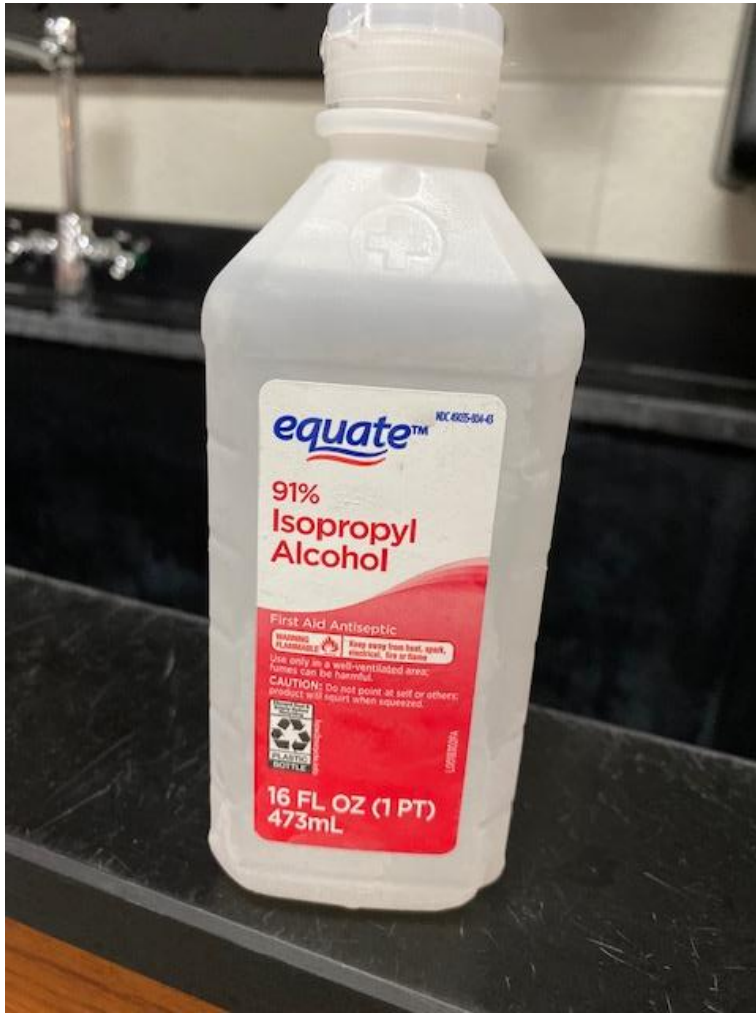
# Strawberry Lab Review



# Pre-Lab Questions

- Answer the 2 pre-lab questions with complete sentences on your paper.
- **1.) What do you think the DNA will look like in each of your objects?**
- **2.) Where is DNA found in Eukaryotic and Prokaryotic cells?**

# Materials Used in the lab



- Fill out your observations in this box on your paper using the next few slides. Write with complete sentences.

Observations:

Before extraction	
During extraction	
After extraction	

# Before Extraction:

(Hint: What does the strawberry look like)



# During Extraction:

(Hint: What does the strawberry look like)



**Smashed Strawberry**



**Smashed strawberry with Salty/Soapy Solution applied**

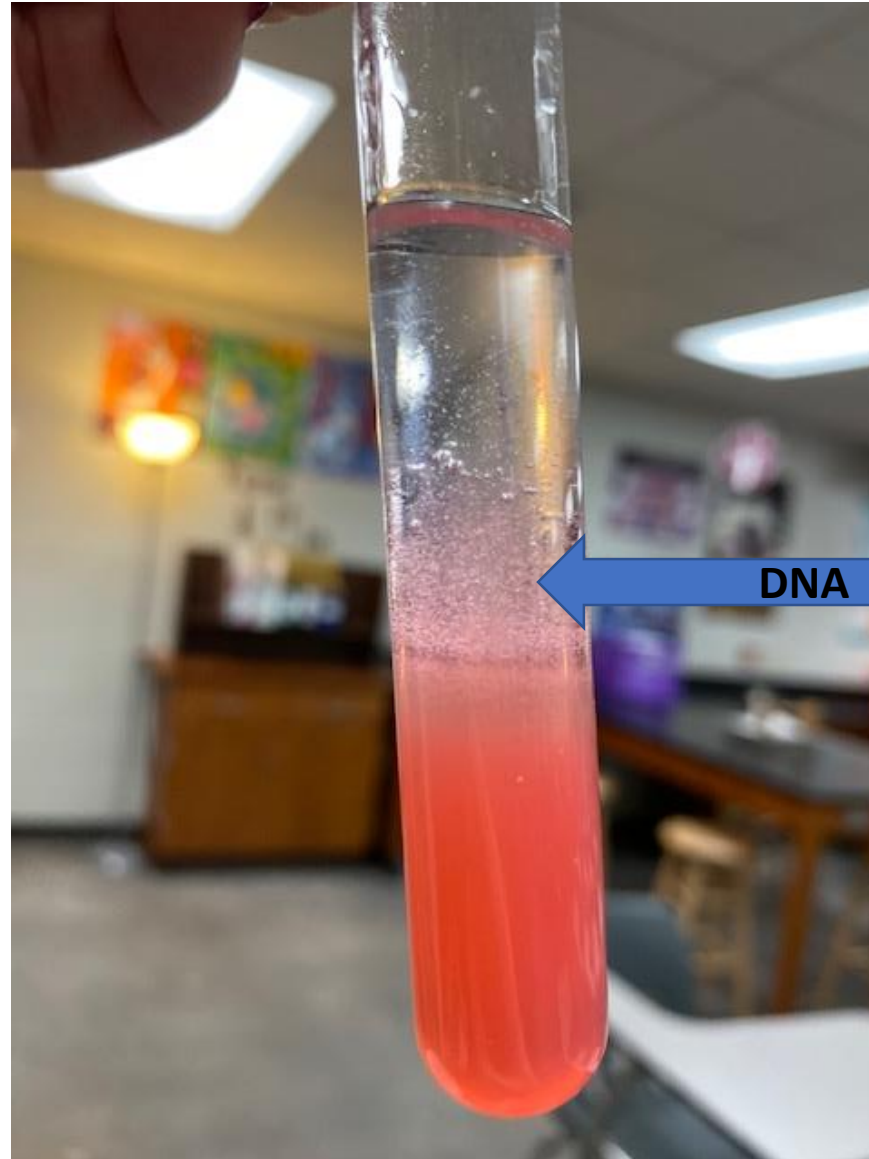
# During Extraction:

(Hint: What does the strawberry look like)



# After Extraction:

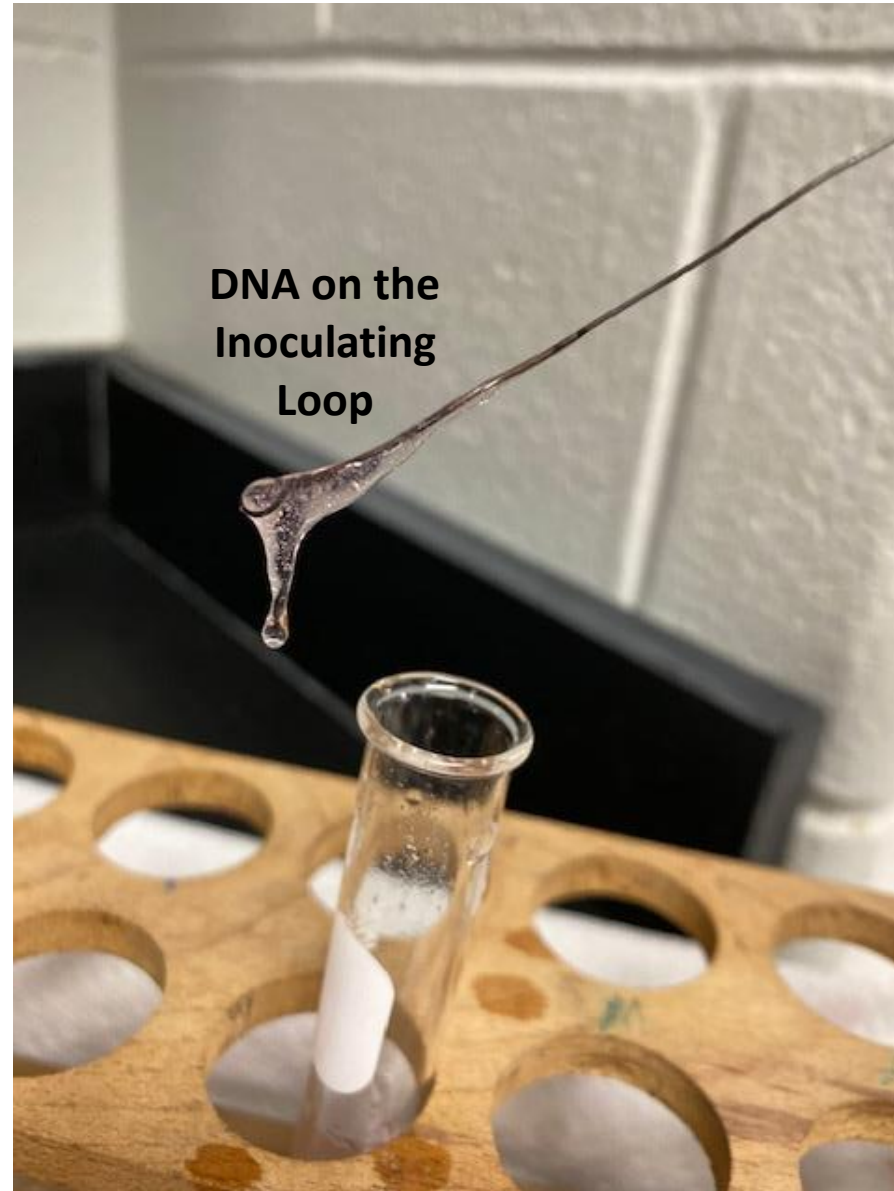
(Hint: What does the strawberry look like)





# After Extraction:

(Hint: What does the DNA look like)



# Results & Conclusion:

- Write down the results and conclusion of this lab on the back of your lab paper. Think about why we did this lab and what every living organism must contain to be considered 'living'!

# Post-Lab Questions

- Answer the Post-Lab questions with complete sentences.