

**Nucleus**

**DNA**  
**(page 294)**

**RNA**  
**(page 300-301)**

**Chloroplasts**

**Mitochondria**

**4 Bases in DNA**

**4 Bases in RNA**

**DNA**

**Lysosome**

1.)

1.)

**Smooth  
Endoplasmic  
Reticulum**

2.)

2.)

**Cytoskeleton**

3.)

3.)

**Nucleolus**

4.)

4.)

**Cell Membrane**

- 4.) Draw a DNA molecule.
- 5.) Label a sugar, phosphate and base. (Called a nucleotide)
- 6.) Circle a nucleotide.

- 1.) Draw an RNA molecule.
- 2.) Label a sugar, phosphate and base. (Called a nucleotide)
- 3.) Circle a nucleotide.

**Cytoplasm**

**Rough Endoplasmic  
Reticulum**

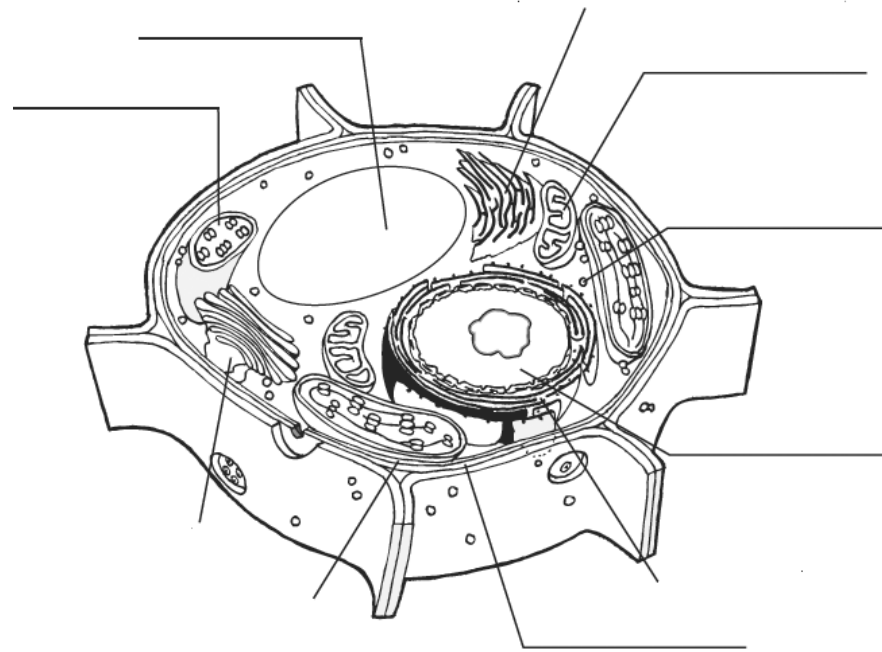
**Vacuole**

**Golgi Apparatus  
(Golgi Body)**

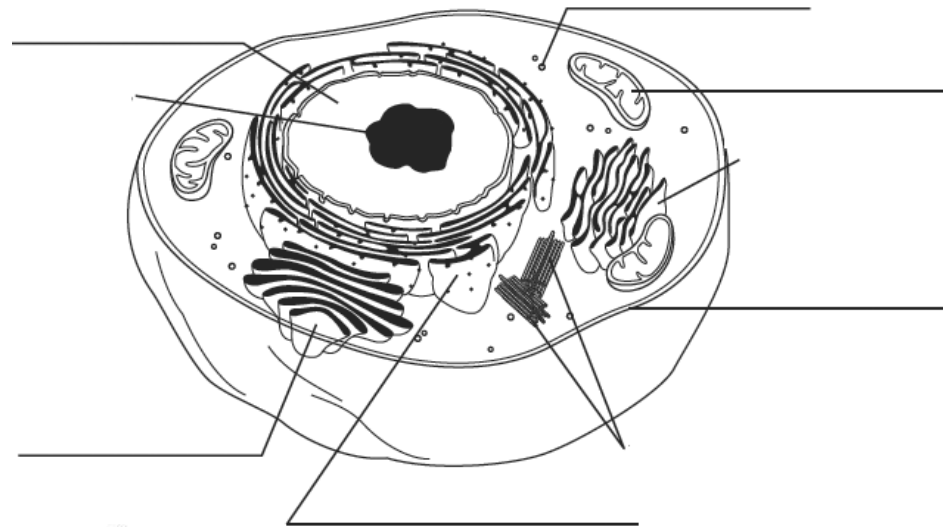
**Ribosome**

**Cell Wall**

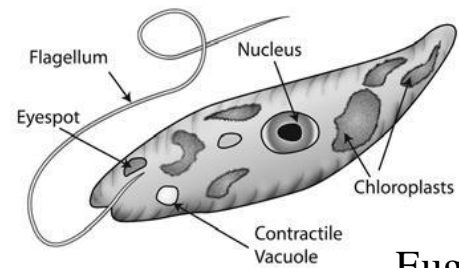
**Centriole**



**Plant Cell  
(175)**



**Animal Cell  
(175)**



**Euglena**